

Table 1

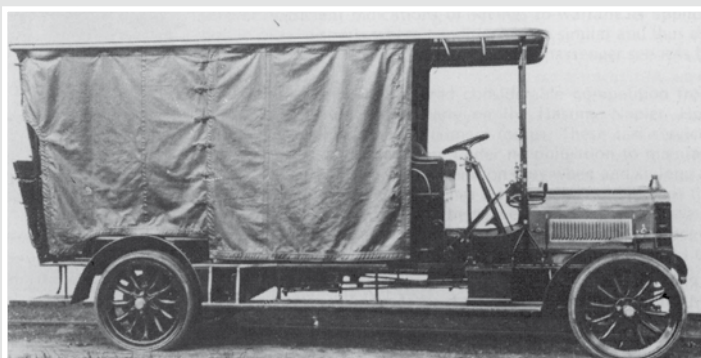
HANMER SPRINGS SERVICE, 1907 (6 VEHICLES)

NZR began road passenger services in 1907, linking the resort town of Hanmer Springs to the railway station at Culverden. Most or all of the vehicles were bodied at NZR's Addington Workshops. The Hanmer-

Culverden service ran for ten years, ceasing as a result of shortages, and a decline in tourism, during World War I. Nine years were to pass before NZR re-commenced road passenger transport services.

No.	Reg.	New	Withdrawn	Chassis	Chassis No.	Body	Seats	Area
1		1907	c. 1917	Albion			Ch12	CC
2		1907	c. 1917	Albion			Ch12	CC
3		1907	c. 1917	Albion			Ch12	CC
4		1907	c. 1917	Albion			SC9	CC
5		1907	c. 1917	Darracq			-	CC
6		1909	4.1911	Halley			Ch15	CC

No. 6 was converted to a rail inspection car in 1911.



Above. NZR's first road passenger vehicles included this Albion charabanc. The livery is thought to have been the Pullman green also used on railway carriages. NZR photo, Clive Otway collection.

Left. Another early NZR charabanc, thought to be Darracq No. 5, demonstrating the facilities provided to protect passengers from wet weather. NZR photo, Alan Bellamy collection.