

April 2023

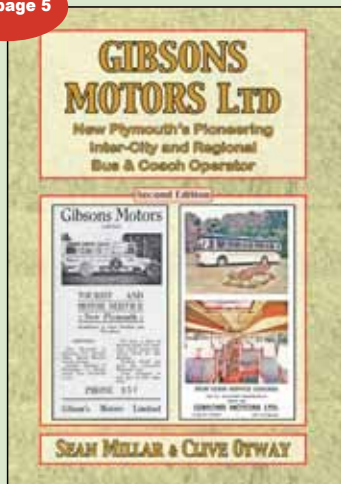
Website: www.seanmillar.co.nz Email: seanmillar@orcon.net.nz

Landline: (09) 815-3885 • Mobile: 0220-811-816 • Postal: 144 / 211 Lincoln Rd, Henderson, Auckland 0610

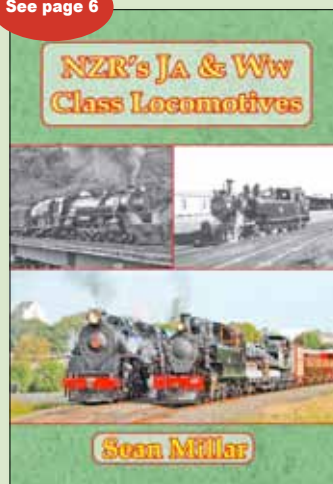
- All prices include GST. A single charge of \$5.00 per order is made for postage & packing within NZ, regardless of the size of the order.
- Preferred method of payment is by DIRECT CREDIT to: Sean Millar - ANZ Bank account no. 06-0284-0177608-00. Please include your name in the payment details, and advise your order details and delivery address by email.

RECENT TITLES

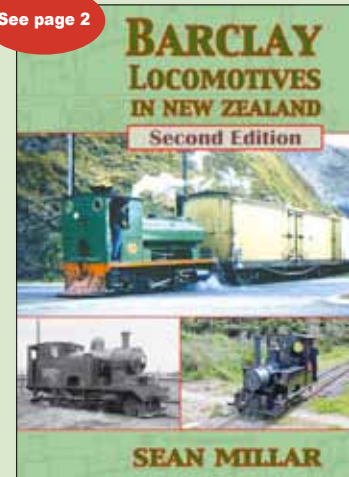
See page 5



See page 6



See page 2



CURRENTLY AVAILABLE TITLES

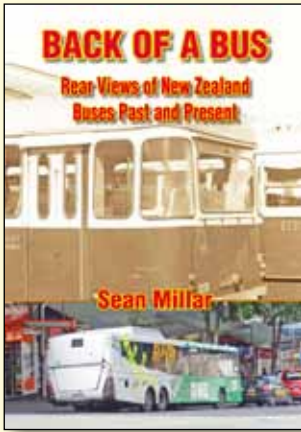
(Listed in Alphabetical Order - pages 1-4)



AEC Buses in New Zealand (2nd ed)

An illustrated history of New Zealand buses fitted with chassis supplied new by the major British manufacturer AEC between 1914 and 1977. Second-hand imports also covered. A4 format, staple bound. 48 pages – printed in colour throughout. ISBN 978-1-927329-26-9. **\$20.00**. A single charge of **\$5.00** per order is made for postage & packing within NZ, regardless of the size of the order.

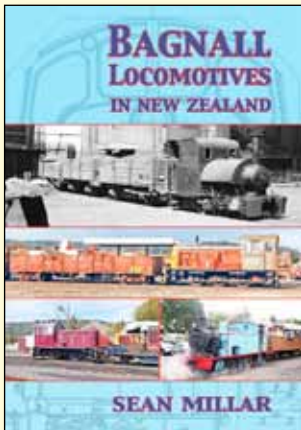
"An absolutely astonishing collection of period photographs, many in colour." British Buses Worldwide reviewing the 1st edition



Back of a Bus

Rear views of New Zealand Buses Past and Present

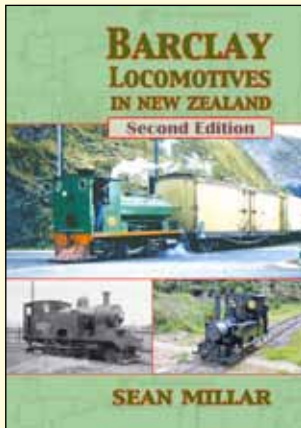
An informatively-captioned album of photographs of the rear ends of a wide variety of New Zealand buses past and present. Carefully edited to ensure not a single front of a bus is in view! A4 format, staple bound. 64 pages - 8 of which, including the covers, are in full colour. ISBN 978-0-908726-88-2. **\$20.00.** A single charge of **\$5.00** per order is made for postage & packing within NZ, regardless of the size of the order.



Bagnall Locomotives in New Zealand

The history of the 10 steam and 20 diesel locomotives supplied to NZ by British builder W G Bagnall Ltd, between 1882 and 1958. One remains in active industrial service, while three others are preserved in operational condition. A4 format, staple bound. 68 pages - 16 of which, including the covers, are in full colour. ISBN 978-1-927329-06-1. **\$20.00.** A single charge of **\$5.00** per order is made for postage & packing within NZ, regardless of the size of the order.

"Well researched and very informative". New Zealand Railway Observer.

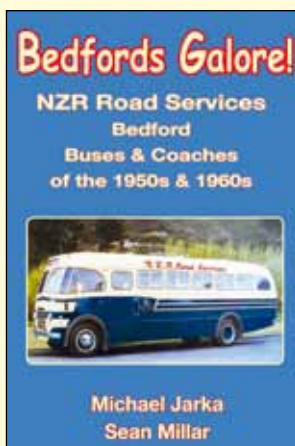


Barclay Locomotives in New Zealand

SECOND EDITION - 12 extra pages, additional photos, fully updated

A history of the 36 industrial steam locomotives supplied to New Zealand by Scottish builder Andrew Barclay Sons & Co Ltd, 1878-1947. Includes coverage of the 10 in preservation and the five rebuilt as diesels, etc. 56 pages - 16 of which, incl covers, are in full colour. ISBN 978-1-927329-28-3. **\$20.00.** A single charge of **\$5.00** per order is made for postage & packing within NZ, regardless of the size of the order.

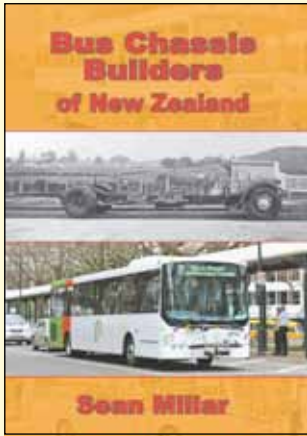
"Updated information [plus] a fascinating gallery of photographs of these little engines at work". NZ Railway Observer.



Bedfords Galore! NZR Road Services Bedford Buses & Coaches of the 1950s & 1960s

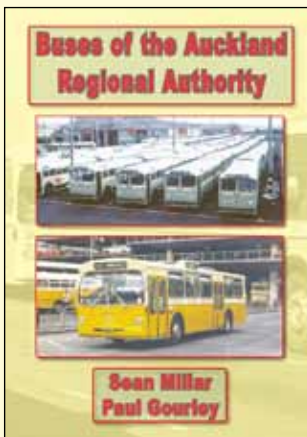
NZRRS is believed to have been world's largest operator of Bedford buses. This full illustrated fleet list covers vehicles it acquired new during 50s and 60s. A4 format, staple bound. 68 pages – covers in colour inside and out, other pages in black & white. ISBN 978-0-908726-82-0. **\$20.00.** A single charge of **\$5.00** per order is made for postage & packing within NZ, regardless of the size of the order.

"Captures an era of New Zealand Railways Road Services that is fondly remembered". New Zealand Railway Observer.



Bus Chassis Builders of New Zealand

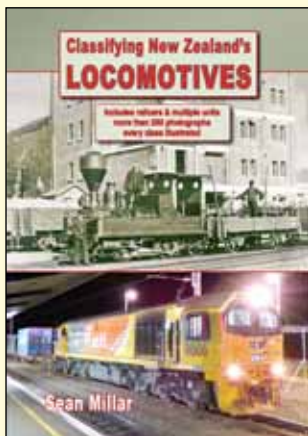
An illustrated history of New Zealand's bus chassis builders, active from 1934 to the present. Provides a fascinating record of a seldom described aspect of our industrial and transport history. A4 format, staple bound. 56 pages - 20 of which, including the covers, are in full colour. ISBN 978-1-927329-08-5. **\$20.00**. A single charge of **\$5.00** per order is made for postage & packing within NZ, regardless of the size of the order.



Buses of the Auckland Regional Authority

All the buses owned by NZ's then second-largest bus operator during its 25-year existence, 1964-1989. 110 photographs showing every type, often with left and right side views. A4 format, staple bound. 68 pages – covers in colour inside and out, other pages in black & white. ISBN 978-0-908726-90-5. **\$20.00**. A single charge of **\$5.00** per order is made for postage & packing within NZ, regardless of the size of the order.

"If you want to know about the buses of Auckland, this is the book I would thoroughly recommend." The Driving Wheel.

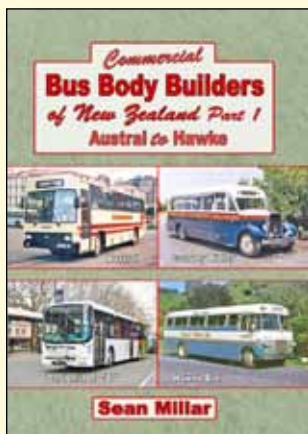


Classifying New Zealand's Locomotives

Explains how NZ motive power classifications were derived. Over 260 photographs, illustrating every class. Includes a unique illustrated alphabetical list of classifications. A4 format, staple bound. 68 pages - 12 of which, including the covers, are in full colour. ISBN 978-1-927329-19-1. **\$20.00**. A single charge of **\$5.00** per order is made for postage & packing within NZ, regardless of the size of the order.

"A Fascinating Railway Detective Story". NZ Railfan.

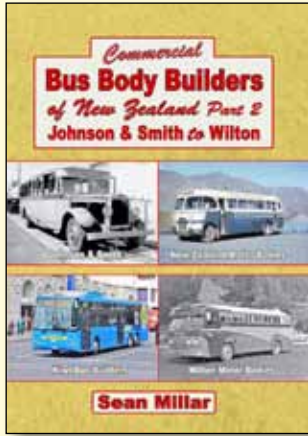
"Contains much interesting information." NZ Railway Observer.



Commercial Bus Body Builders of NZ Part 1: Austral to Hawke

Part 1 of an alphabetically-organised illustrated history of NZ commercial bus body builders, including major firms Crawley Ridley & Co, Coachwork International, Designline and Hawke. A visual feast of 172 photographs, most previously unpublished. 48 pages – printed in colour throughout. ISBN 978-1-927329-24-5. **\$20.00**. A single charge of **\$5.00** per order is made for postage & packing within NZ, regardless of the size of the order.

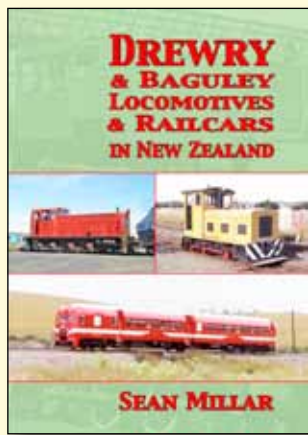
"These two books have provided me with much enjoyment". Customer.



Commercial Bus Body Builders of NZ Part 2: Johnson & Smith to Wilton

Part 2 of an alphabetically-organised illustrated history of NZ commercial bus body builders, including major firms Kiwi Bus Builders, Modern Motor Bodies and NZ Motor Bodies. A visual feast of 178 photographs, most previously unpublished. 48 pages – printed in colour throughout. ISBN 978-1-927329-25-2. **\$20.00.** A single charge of **\$5.00** per order is made for postage & packing within NZ, regardless of the size of the order.

"These two books have provided me with much enjoyment". Customer.

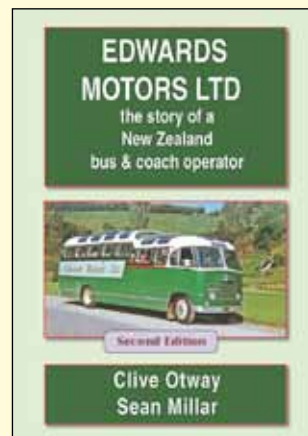


Drewry & Baguley Locomotives & Railcars in New Zealand

The histories of the locomotives, railcars, inspection trolleys and conversion kits supplied to NZ by the Drewry Car Co and EE Baguley Ltd. A4 format, staple bound. 72 pages - 24 of which, including the covers, are in full colour. ISBN 978-1-927329-23-8. **\$20.00.** A single charge of **\$5.00** per order is made for postage & packing within NZ, regardless of the size of the order.

"Deserves to be part of every rail enthusiast's library". NZ Railway Observer.

"Great value - a definitive history". NZ Railfan.

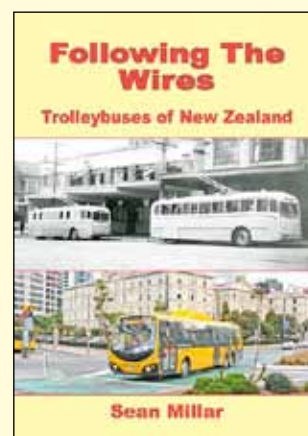


Edwards Motors Ltd

the story of a New Zealand bus & coach operator

A comprehensive history of a well-known Auckland-based operator that served the Waikato and neighbouring areas, and was active in the tourist industry. A4 format, comb bound. 102 pages printed in black & white, plus covers printed in colour inside and out. Second edition. ISBN 978-0-908726-98-1. **\$45.00.** A single charge of **\$5.00** per order is made for postage & packing within NZ, regardless of the size of the order.

"A model example of a regional bus company history". Bob Stott.



Following the Wires: trolleybuses of New Zealand

An illustrated history of NZ's trolleybuses since 1924. Includes fleet lists covering all 495 trolleybuses to have served in this country. A4 format, staple bound. 48 pages – printed in full colour throughout. 75 photographs plus 6 specially-commissioned maps. Standard edition. ISBN 978-0-908726-93-8. **\$20.00.** A single charge of **\$5.00** per order is made for postage & packing within NZ, regardless of the size of the order.

"The definitive book on the trolleybus in New Zealand. Will become the standard reference on this subject in the years ahead." Graham Stewart.

Sean Millar Publishing • Website: www.seanmillar.co.nz • Email: seanmillar@orcon.net.nz • Landline: (09) 815-3885 • Mobile: 0220-811-816
 Our preferred means of payment is by DIRECT CREDIT to: Sean Millar - ANZ Bank account no. 06-0284-0177608-00.

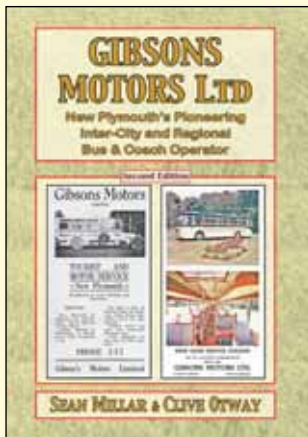


Freight at the Back

New Zealand's Distinctive Composite Buses & Coaches

A unique illustrated history of NZ's composite freighter buses & coaches, a distinctive part of the country's road transport industry from the 1950s to the 1990s. A4 format, staple bound. 68 pages - 20 of which, including the covers, are in full colour. 180 photographs. ISBN 978-0-908729-05-4. **\$20.00**. A single charge of **\$5.00** per order is made for postage & packing within NZ, regardless of the size of the order.

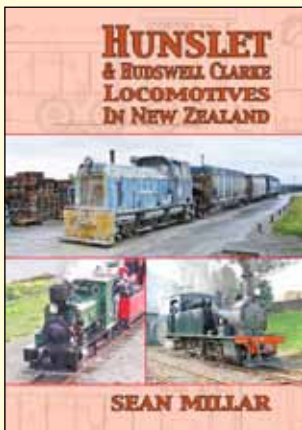
"Essential for the library." New Zealand Railway Observer.



Gibsons Motors Ltd

New Plymouth's Pioneering Inter-City and Regional Bus & Coach Operator (Second Edition)

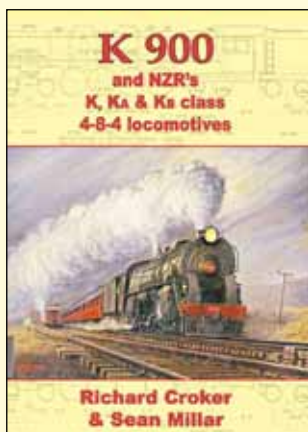
A fully-revised and profusely-illustrated history of one of New Zealand's longest-serving and well-regarded bus & coach operators. A4 format, staple bound. 40 pages, printed in colour throughout. ISBN 978-1-927329-30-6. **\$20.00**. A single charge of **\$5.00** per order is made for postage & packing within NZ, regardless of the size of the order.



Hunslet & Hudswell Clarke Locomotives in New Zealand

The histories of the 17 steam and 27 diesel locomotives supplied to NZ by two Leeds-based British builders, between 1864 and 1958. A4 format, staple bound. 52 pages - 16 of which, including the covers, are in full colour. ISBN 978-1-927329-18-4. **\$20.00**. A single charge of **\$5.00** per order is made for postage & packing within NZ, regardless of the size of the order.

"An interesting book that will be valued by those interested in small locomotives." The New Zealand Railway Observer.



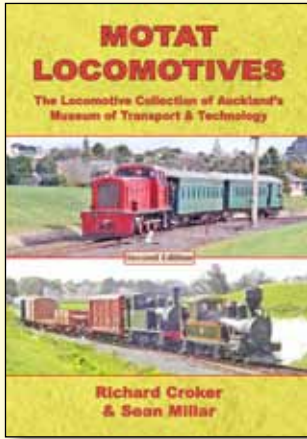
K 900

and NZR's K, Ka & Kb class 4-8-4 locomotives

The story of NZR's first 4-8-4, the impressive K 900, its classmates and the later closely-related Ka and Kb classes. A4 format, staple bound. 52 pages - 20 of which, including the covers, are in full colour. ISBN 978-1-927329-15-3. **\$20.00**. A single charge of **\$5.00** per order is made for postage & packing within NZ, regardless of the size of the order.

"A good account of NZR's big steam power." NZ Railway Observer.

"Nicely presented and welcoming." New Zealand Railfan.

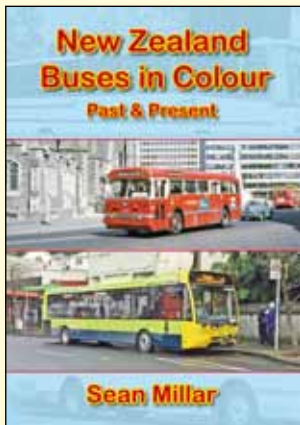


MOTAT Locomotives

The Locomotive Collection of Auckland's Museum of Transport & Technology (Second Edition)

A fully-revised and profusely-illustrated catalogue of MOTAT's varied collection of 20 locomotives. A4 format, staple bound. 40 pages, printed in colour throughout. ISBN 978-1-927329-27-6. **\$20.00**. A single charge of **\$5.00** per order is made for postage & packing within NZ, regardless of the size of the order.

"An enjoyable publication". NZ Railway Observer.

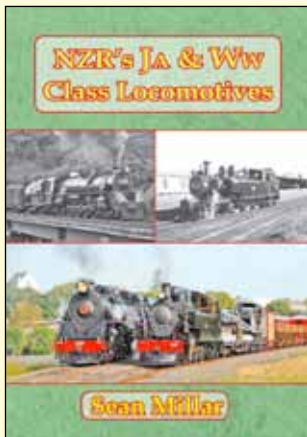


New Zealand Buses in Colour Past & Present

A collection of Informatively-captioned colour photographs showing a wide range of New Zealand buses and coaches, past and present. Few, if any, have been published previously. 48 pages, A4 format, staple bound. ISBN 978-1-927329-21-4. **\$20.00**. A single charge of **\$5.00** per order is made for postage & packing within NZ, regardless of the size of the order.

"A great book." Auckland customer.

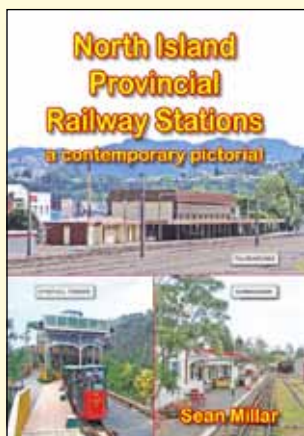
"Very professional as usual." Wellington customer.



NZR's JA & Ww Class Locomotives

Illustrated histories of NZR's Ja & Ww classes. Many previously unpublished illustrations, mostly in colour, four mini blueprints, five tables and a reading list. A4 format, staple bound. 40 pages, printed in colour throughout. ISBN 978-1-927329-29-0. **\$20.00**. A single charge of **\$5.00** per order is made for postage & packing within NZ, regardless of the size of the order.

"A celebration of two of New Zealand's most successful steam locomotive [types]". NZ Railway Observer.

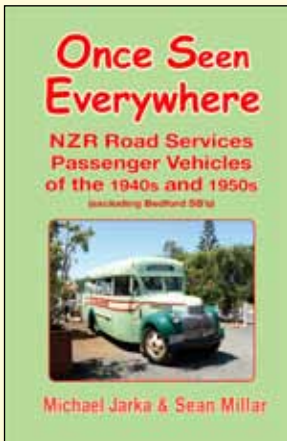


North Island Provincial Railway Stations a contemporary pictorial

An all-colour pictorial album illustrating North Island stations outside the Auckland & Wellington suburban networks. Includes stations on heritage lines and stations no longer on operating lines. A4 format, staple bound. 48 pages, More than 120 photographs. ISBN 978-0-908726-94-3. **\$20.00**. A single charge of **\$5.00** per order is made for postage & packing within NZ, regardless of the size of the order.

"A delightful book." New Zealand Railway Observer.

Sean Millar Publishing • Website: www.seanmillar.co.nz • Email: seanmillar@orcon.net.nz • Landline: (09) 815-3885 • Mobile: 0220-811-816
 Our preferred means of payment is by DIRECT CREDIT to: Sean Millar - ANZ Bank account no. 06-0284-0177608-00.

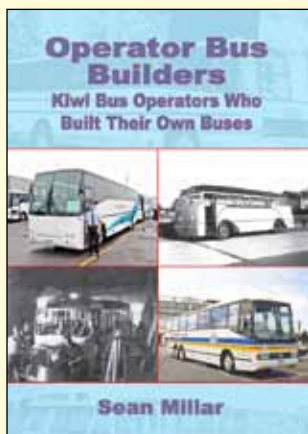


Once Seen Everywhere

NZR road passenger service vehicles of the 1940s and 1950s (excluding Bedford SB's)

A comprehensively illustrated list of vehicles acquired by NZ's largest bus and coach operator during the 1940s and 1950s. A4 format, staple bound. 68 pages – covers in colour inside and out, other pages in black & white. ISBN 978-0-908726-81-3. **\$20.00.** A single charge of **\$5.00** per order is made for postage & packing within NZ, regardless of the size of the order.

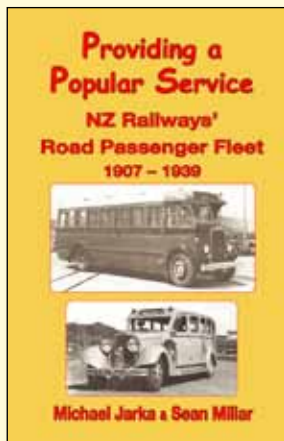
"Fills a most interesting gap in New Zealand Railway's history." New Zealand Railway Observer.



Operator Bus Builders of New Zealand

An illustrated history of the NZ bus operators who have built their own buses. Provides a fascinating record of a seldom described aspect of our industrial and transport history. A4 format, staple bound. 48 pages – printed in colour throughout. 2nd ed ISBN 978-1-927329-07-8. **\$20.00.** A single charge of **\$5.00** per order is made for postage & packing within NZ, regardless of the size of the order.

"A really interesting read, nicely laid out with some great pictures!" Trevor Jones.

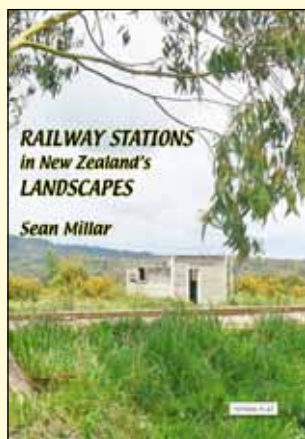


Providing a Popular Service

NZ Railways' Road Passenger Fleet 1907 - 1939

An illustrated list of the varied fleet by NZ's largest operator during its early years. A4 format, staple bound. 68 pages – covers in colour inside and out, other pages in black & white. ISBN 978-0-908726-80-6. **\$20.00.** A single charge of **\$5.00** per order is made for postage & packing within NZ, regardless of the size of the order.

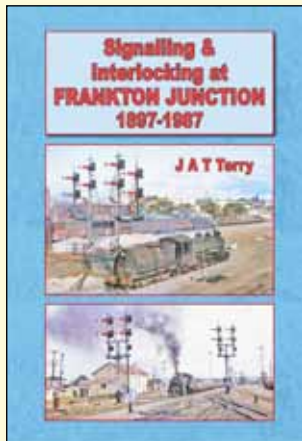
"For anyone interested in New Zealand's transport heritage, this book will be invaluable." New Zealand Railway Observer.



Railway Stations in New Zealand Landscape

An all-colour album of contemporary railway station photographs – the majority are previously unpublished. Most are reproduced in half-page landscape A5 or double-page landscape A3. 48 pages, A4 format, staple bound. ISBN 978-927329-20-7. **\$20.00.** A single charge of **\$5.00** per order is made for postage & packing within NZ, regardless of the size of the order.

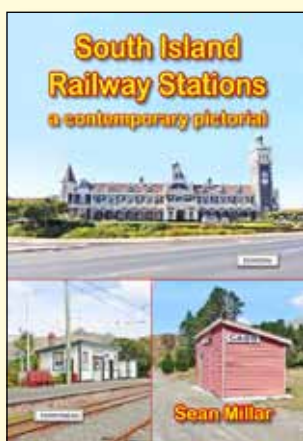
"An interesting book." New Zealand Railway Observer.



Signalling and Interlocking at Frankton Junction 1897-1987

The most detailed history of its type ever published. Includes more than 200 photos and plans. Comb-bound, A4 format. Colour covers with acetate protectors, plus 132 pages printed in black & white. ISBN 978-0-908726-06-6. **\$45.00**. A single charge of **\$5.00** per order is made for postage & packing within NZ, regardless of the size of the order.

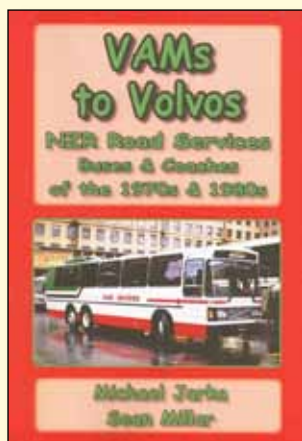
"I welcome this book for covering a neglected topic and at a popular location in great depth." New Zealand Railfan.



South Island Railway Stations a contemporary pictorial

An all-colour pictorial album illustrating South Island stations including stations on heritage lines and stations no longer on operating lines. A4 format, staple bound. 48 pages. More than 120 photographs. ISBN 978-0-908726-95-0. **\$20.00**. A single charge of **\$5.00** per order is made for postage & packing within NZ, regardless of the size of the order.

"The reviewer found much to enjoy. Recommended - a timely analysis." New Zealand Railfan



VAMs to Volvos

NZR Road Services buses & coaches of the 1970s and 1980s

A comprehensive illustrated list of vehicles purchased by NZ's largest bus and coach operator during its final two decades. A4 format, staple bound. 68 pages – covers in colour inside and out, other pages in black & white. ISBN 978-0-908726-85-1. **\$20.00**. A single charge of **\$5.00** per order is made for postage & packing within NZ, regardless of the size of the order.

"A worthwhile addition to any transport library." NZ Railway Observer.

See our website www.seanmillar.co.nz for additional items & information.



- Prices listed above are retail, and include GST. A single charge of **\$5.00** per order is made for postage & packing within NZ, regardless of the size of the order.
- Our preferred means of payment from within NZ is a by DIRECT CREDIT to: Sean Millar - ANZ Bank account no. 06-0284-0177608-00. Please include your name in the payment details, and advise your requirements and delivery address by email.
- Overseas customers are currently not supplied.
- NZ trade customers are currently not supplied.